

LEVEL 1

Q: What silhouette, popular in the 1970's, is shown below?



A:

Q: What type of hat is shown below?



A:

Q: Name this silhouette :



A:

Q: What type of hat is pictured below?



A:

Q: Women who dressed like this in the 1920's were called _____.

A:

Q: In what decade would you see this dress?



A:

Q: What device worn under the clothing makes a woman's backside look bigger?

A:

Q: In the 1890 's, the American "Ideal Woman" was known as the _____ ?

A:

Q: Name the silhouette shown to the left.

A:

Q: What is the name of this silhouette popular during this decade?

A:

Q: How often do fashion trends repeat? Every _____ to _____ years.

A:

Q: In the 1900's women wore _____ to protect clothing while riding in the new automobile.

A:

Q: During the 1910's, the wearing of bloomers was influenced by the invention of the _____ ?

A:

Q: In what decade did children wear clothing made from flour sacks and hand-me-downs?

A:

Q: The _____ jacket was a men's fashion that became popular in the 1940's.

A:

Q: In what decade did teenagers begin to develop their own fashion style influenced by TV, magazines and rock music?

A:

Q: In the 1930's, _____ dresses were popular.

A:

Q: What blouse, popular in the 1900's, buttoned down the front and was separate from the skirt?

A:

LEVEL 2

Q: What fashion decade was called the Civil Rights Era?

A:

Q: What fashion decade was called the Dot Com Era?

A:

Q: What fashion decade was called the Rock N' Roll Era?

A:

Q: What fashion decade was called the Industrial Revolution era?

A:

Q: _____ is the principle of design that refers to a dominant focal point, or center of interest.

A:

Q: What was the 1st Fashion Capital?

A:

Q: Which fashion designer is best know for creating The New Look?

A:

Q: Which fashion designer is best know for creating the Little Black Dress?

A:

Q: Which fashion capital is know for clean cuts, casual styles and the use of separates?

A:

Q: New York fashions are usually made from _____ fibers.

A:

Q: Which fashion capital is know for loose and unstructured designs with an Asian influence?

A:

Q: Which fashion capital is known for casual elegance and luxurious fabrics like Merino wool?

A:

Q: Which fashion capital is knows for two distinct styles: conservative, traditional styles AND the "rebel" street look and "punk" movement?

A:

Q: Fashion inspired by anime is popular in which fashion capital?

A:

Q: What is the term? Clothing that continues to be in fashion over an extended period of time.

A:

Q: What is the term? Wild, daring and unconventional fashion. It does not appeal to most people.

A:

Q: What is the term? A temporary and passing fashion. It has great appeal to many for a short time.

A:

Q: What is the term? Original, one-of-a-kind and expensive designs made for individual customers.

A:

Q: What is the term? Articles added to complete or enhance an outfit. (Shoes, jewelry, belts, handbags, etc.)

A:

Q: What is the term? The various garment parts that distinguish different styles: necklines, collars, sleeves, etc.

A:

LEVEL 3

Q: What is another term for color?

A:

Q: List the THREE primary colors.

A: 1.
2.
3.

Q: _____ colors are created by combining two primary colors?

A:

Q: _____ colors are created by combining one primary and one secondary color.

A:

Q: What type of line creates a thinner, taller silhouette?

A:

Q: What type of line is considered graceful and feminine?

A:

Q: What type of line will make a person appear shorter and heavier?

A:

Q: What is the term?
Wrapped or hung on the body and usually held in place with pins, buttons, toggles, sashes or belts?

A:

Q: What is the term?
The right size or how tight or loose the clothing is on the person wearing it?

A:

Q: What is the term?
The shape of a clothing style shown by its outer lines?

A:

Q: Which type of Rhythm?
Repetition of line, shape, color, texture or pattern within the design?

A:

Q: Which type of Rhythm?
Direct contrast created by perpendicular lines, black and white, or complementary colors placed next to each other.

A:

Q: Which type of Rhythm?
Gradual change in lines, shapes, color values or textures within the design.

A:

Q: Which type of Rhythm?
Created by curved lines that lead from one area of a design to another.

A:

Q: Which type of Rhythm?
Radiation of lines, shapes, colors or textures outward from a central point or area.

A:

Q: What is created when white is added to a hue?

A:

Q: What is created when black is added to a hue?

A:

Q: What color scheme includes tints and shades of one color?

A:

Q: Violets, Blues and Greens are all what types of colors: warm or cool?

A:

Q: Reds, yellows and Oranges are all what types of colors: warm or cool?

A:

LEVEL 4

Q: What type of color scheme uses mostly the “non-colors”: black, white, tan and brown?

A:

Q: Purple, green and orange will create what type of color scheme?

A:

Q: What is added to a hue to create a tone?

A:

Q: _____ is the principle of design that refers to how lines and shapes divide an outfit into parts.

A:

Q: _____ is the element of design that refers to a repeated decorative design usually consisting of lines, shapes and colors.

A:

Q: _____ are the TOOLS of design.

A:

Q: _____ are the RULES of design.

A:

Q: Which manufactured fiber is the strongest fiber?

A:

Q: Which natural fiber is warm, fire resistant and comes from the fleece of sheep?

A:

Q: Which manufactured fiber has a lot of elasticity and stretch?

A:

Q: Which type of weave is the simplest weave?

A:

Q: Which type of weave is the strongest weave and is most commonly used in denim?

A:

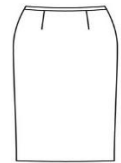
Q: Which type of weave is the most lustrous and luxurious weave?

A:

Q: What type of fabric finish involves adding color to a synthetic fiber solution before it is extruded?

A:

Q: What kind of balance is represented by the skirt below?



A:

Q: What kind of balance is represented by the skirt below?



A:

Q: What type of fabric finish involves adding color, pattern or design to the surface of fabrics?

A:

Q: What type of fabric is created by the continuous interlocking or looping of yarn, creating stretch?

A:

Q: What type of fabric is created by the interlocking of two separate yarns, the warp and the weft?

A:

Q: What natural fiber is comfortable, absorbent, wrinkles easily and is inexpensive?

A:

LEVEL 5

Q: What natural fiber is made from the cocoon of the silkworm and is soft and lustrous?

A:

Q: A good combination of unity and variety is important to create what principle of design?

A:

Q: An outfit is more pleasing to the eye if it is divided into _____ parts, or ratios.

A:

Q: Which type of pattern consists of prints based on lines and shapes?

A:

Q: Which type of pattern consists of prints that are realistic and appear as they would naturally?

A:

Q: T or F? Inspecting the garment before purchasing, or judging the quality, is an important consumer skill.

A:

Q: The Cost Per Wear is determined by the price of the garment _____ by the number of times worn.

A:

Q: Wearing a school uniform because it is required is an example of _____.

A:

Q: Purchasing a shirt because all your friends have one like it is an example of _____.

A:

Q: Commercials, TV shows, movies, magazines and social media are all examples of what consumer influence?

A:

Q: Macy's is an example of what type of store?

A:

Q: What are detachable tags attached to clothing that can be used as a form of advertising?

A:

Q: What are permanently attached to garments that are required by law to include fiber content, garment care and country of origin?

A:

Q: Wal-Mart is an example of what type of store?

A:

Q: What type of store is owned, managed and controlled by a central office?

A:

Q: What type of store carries merchandise made specifically for that label or brand?

A:

Q: What three things is personal coloring based on?

- A:** 1.
2.
3.

Q: What two Color Seasons are considered Cool Colors?

- A:** 1.
2.

Q: What two Color Seasons are considered Warm Colors?

- A:** 1.
2.

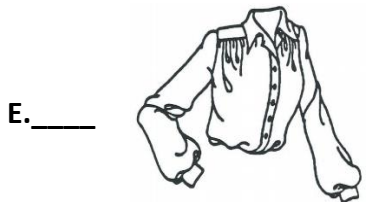
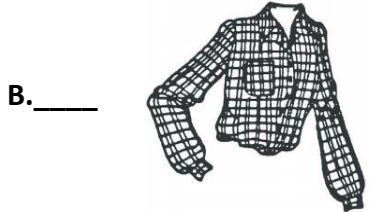
Q: T or F? A person's face shape and body shape has no impact on their personal style.

A:

LEVEL 6

Q: Using numbers, arrange the following shirts in order based on Yang/Yin Fashion.

YANG



YIN

Q: Clothing that provides physical safeguards to the body, preventing harm from climate and environment is worn for what reason?

A:

Q: Clothing that covers the body according to the code of decency established by society is worn for what reason?

A:

Q: What type of collar is pictured below?



A:

Q: What type of jacket/coat is pictured below?



A:

Q: Clothing that establishes one's position or rank in comparison to others is worn for what reason?

A:

Q: When you choose to express yourself by dressing in a way that represents you and your uniqueness, it is an example of which consumer influence?

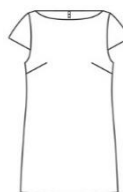
A:

Q: What type of neckline is pictured below?



A:

Q: What type of dress is pictured below?



A:

Q: Clothing that adds decoration or ornamentation and is used as an expression of individuality is worn for what reason?

A:

Q: True or False? The country of origin must be on listed the clothing label.

A:

Q: What type of shirt is pictured below?



A:

Q: What type of pants/trousers is pictured below?



A:

Q: Clothing that establishes who someone is, what they do, or to which group(s) they belong to is worn for what reason?

A:

Q: True or False? The manufacturer number must be listed on the clothing label.

A:

Q: What type of sleeve is pictured below?



A:

Q: What type of skirt is pictured below?



A:

LEVEL 7

Q: What Silhouette?
Shoulders and hips are similar width with a narrow waist.

Famous In:
1890's, 1930's, 1950's

A:

Q: What Silhouette?
Little variation between the shoulders, waist and hips.

Famous In:
1920's, 1960's, 1990's

A:

Q: What Silhouette?
Narrow shoulders and wide hips.

Famous In:
1970's

A:

Q: What Silhouette?
Wide shoulders and narrow hips.

Famous In:
1910's, 1940's, 1980's

A:

Q: In which decade were poodle skirts, saddle shoes and capri pants popular?

A:

Q: In which decade were hobble skirts, the first women's bathing suit and bloomers popular?

A:

Q: In which decade were leg-o-mutton sleeves, shirtwaist's and duster coats popular?

A:

Q: In which decade were bare midriff's and "grunge" popular?

A:

Q: In which decade were leggings/jeggings, cutouts and "Hipster" style popular?

A:

Q: In which decade were "Flappers", costume jewelry and a dropped waistline popular?

A:

Q: In which decade was the fashion below popular?

A:



Q: In which decade was the fashion below popular?

A:



Q: In which decade was the fashion below popular?

A:



Q: In which decade was the fashion below popular?

A:



Q: In which decade was the fashion below popular?

A:



LEVEL 8

Q: How is the value of a garment determined?

A:

Q: What was the ideal of feminine beauty during the 1890's?



A:

Q: List an example of a department store.

A:

Q: List an example of a manufacturer-owned store.

A:

Q: List an example of a chain store.

A:

Q: Which TWO designers are considered the most influential of the 20th century?

A: 1.
2.

Q: Give TWO examples of accessories that could be used in fashion.

A:

Q: What type of shirt is pictured below?



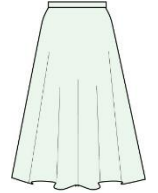
A:

Q: What kind of neckline is pictured below?



A: Cr

Q: What kind of skirt is pictured below?



A:

Q: What Fashion Career?
A person who designs a garment or series of garments using sketches and mood boards.

A:

Q: What Fashion Career?
A person who coordinates the clothes, jewelry and accessories for fashion shows, celebrities or other public figures.

A:

Q: What Fashion Career?
A person who works with a client to design, select and/or buy a coordinated wardrobe of garments for that client.

A:

Q: What Fashion Career?
A person who selects and buys the mix of clothing and accessories available in stores.

A:

Q: What Fashion Career?
A person who oversees the promotion and advertising of a designer's new or existing clothing lines and accessories.

A:

Q: What Fashion Career?
A person who photographs clothing on fashion models for use in advertising.

A:

Q: What Fashion Career?
A person who models clothing and accessories for photographs or fashion shows.

A:

Q: What Fashion Career?
A person who finds or creates appropriate apparel for opera, ballet, plays, movies or TV.

A:

Q: What Fashion Career?
A person who locates and presents works of art in museum exhibitions.

A:

Q: What Fashion Career?
A person involved in the process of creating designs for woven, knitted or printed fabrics.

A:

LEVEL 9

Decade	Silhouette (Write It Out)	Draw An Example of the Silhouette	<u>One</u> Popular Fashion of the Decade
1890's			
1900's			
1910's			
1920's			
1930's			
1940's			
1950's			
1960's			
1970's			
1980's			
1990's			
2000's			
2010's			

LEVEL 10

Quick Sketch



Choose a fashion decade below and do a Quick Sketch including at least THREE popular styles/accessories from the decade. (Circle One Below)

1890

1900

1910

1920

1930

1940

1950

1960

1970

1980

1990

2000

2010