



Proportion & Scale in Fashion

1. Proportion

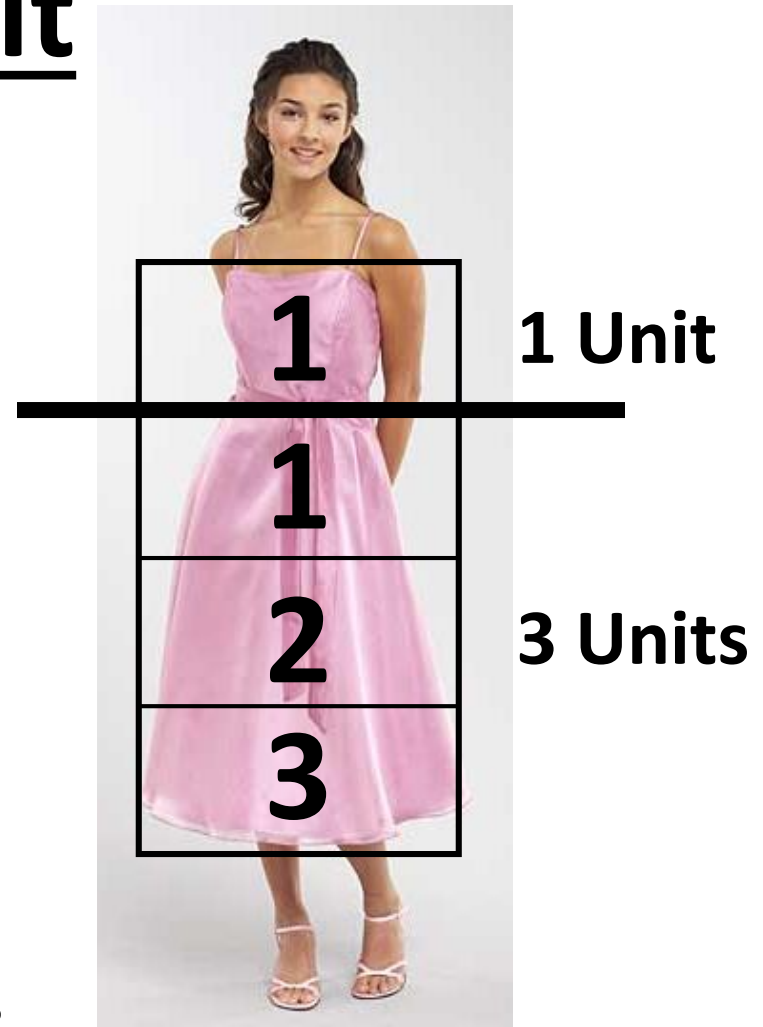
- Refers to how lines and shapes divide an outfit into parts.
- It involves the relationship of one part compared to the other parts of the outfit as a whole.



proportionally
flattering

2. Dividing an Outfit

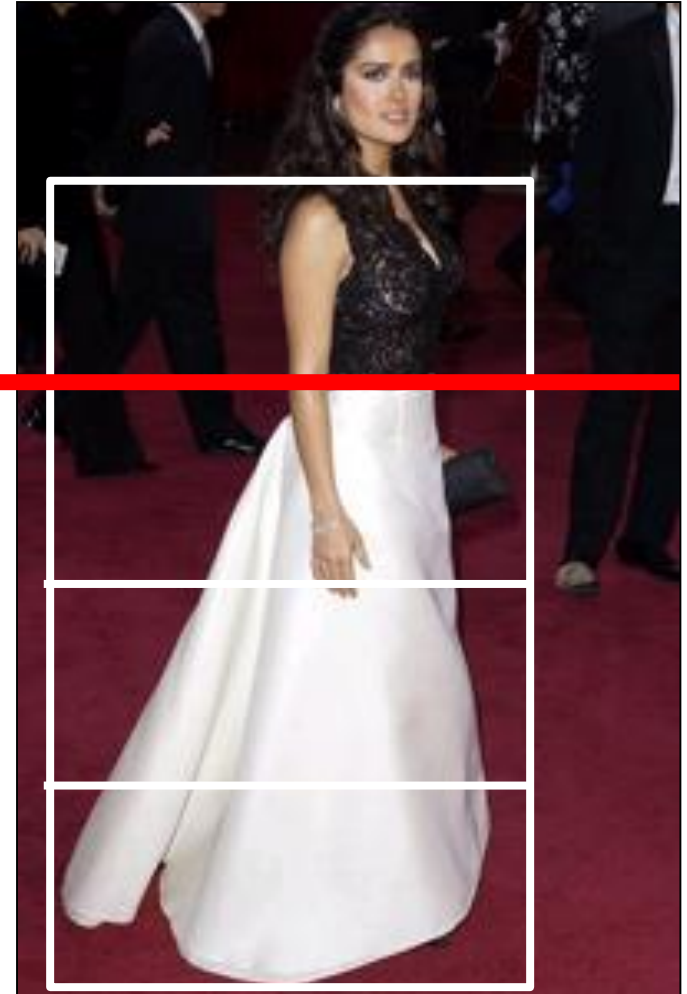
- Any fashion can be divided into parts and compared, which creates a ratio.
 - Visually divide the outfit into equal units.
 - Where there is a line, color, texture or shape change, begin the first part of the ratio.
 - The second part of the ratio is the remaining part of the outfit.
 - Compare the top to the bottom to get the proportion of the outfit.



1 to 3 Ratio

3. Ratios

- An outfit is more pleasing to the eye if it is divided into uneven or unequal parts and if the parts are in scale with the body.
 - 1:3 ratio --2:3 ratio --3:5 ratio
- Uneven ratios are more similar to natural body proportions.
- What is the ratio of the outfit in the picture?



4. Altered Proportions

- Clothing proportions can be manipulated using the elements of design to visually alter body proportions.
- Illusions about the figure can be created by changing the natural proportions.



5. Scale

- Refers to the relationships of individual parts of an outfit in comparison to the rest of its parts.

