

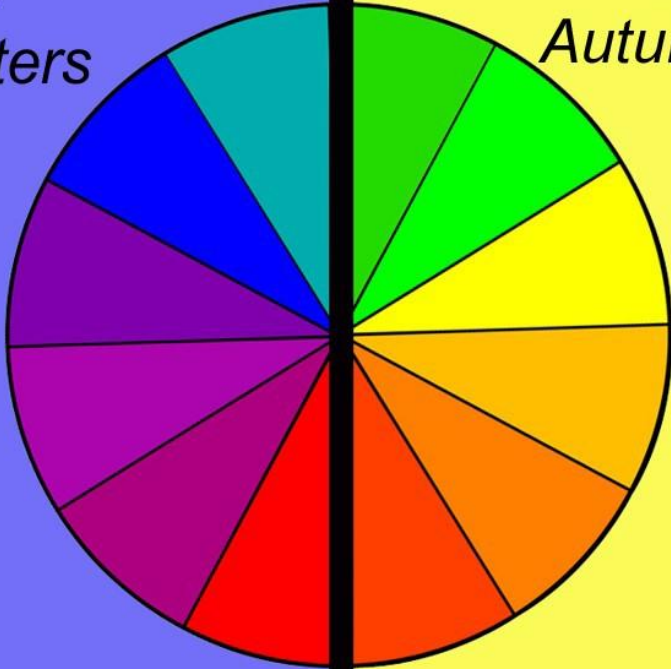
# Personal Coloring



**Color Season Analysis**

# Color Temperature

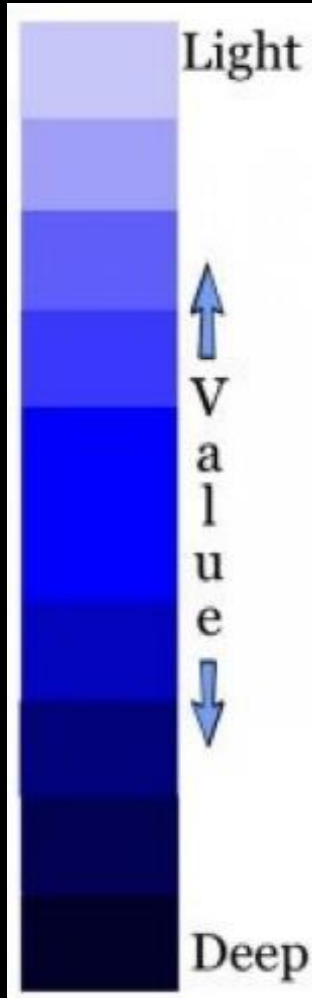
*Summers  
&  
Winters*



**COOL**  
Blue Based

*Springs  
&  
Autumns*

**WARM**  
Yellow Based



- Colors that are blue based are Cool.
- Colors that are yellow based are warm.
- The value of a hue can be either light or dark (deep).

# Color Undertones

## The best clothing colors for your skin tone

\* Finding your color profile: Look at the veins on your wrist or palm.



People with cool undertones have blue or purple looking veins



People with warm undertones have green-looking veins

# Color Swatch Test



- Perform a color swatch test to determine your color season:
  - Cool
    - Winter
    - Summer
  - Warm
    - Autumn
    - Spring



# Winter

- Best colors for Winters are blue-based or pure colors.



## WINTER

**Hair**

**Eyes**

**Skin**

**Your Colours**

# WHICH WINTER ARE YOU?

CLEAR WINTER

COOL WINTER

DEEP WINTER

## SKIN COLORS

milky white, fair, neutral beige, porcelain, pale olive may have grayish freckles

light and neutral beige, cool beige, ivory, cool olive

neutral beige, medium beige, olive, tan, cocoa, ebony, may have grayish freckles

## HAIR COLORS

light to deep brown, black-brown

light to deep ash brown, black-brown, gray, silver

medium to deep brown, black-brown, black, salt & pepper, gray, silver

## COLORS OF THE EYES

jewel like blue, green, hazel, light brown

grayish blue or green, brown, gray

grayish brown, deep brown, black-brown, deep hazel

# Clear Winter

- Your Neutral Colors: pure white, black, navy, gray
- Avoid: warm and muted colors like orange, coral, warm browns
- Your Makeup: use your palette colors to your eyes, lips and nails, foundation and blusher should be cool and rosy undertones, avoid bronzer.
- Your Jewelry: silver, white gold, rose gold
- Your style: dramatic and romantic



# Cool Winter

- Your Neutral Colors: pure white, black, navy, gray
- Avoid: warm and golden colors- brown, orange, coral
- Your Makeup: use your palette colors to your eyes, lips and nails, foundation and blusher should be cool and rosy undertones, avoid bronzer.
- Your Jewelry: silver, white gold
- Your style: dramatic and classic





# Deep Winter

- Your Neutral Colors: pure white, black, navy, onyx-gray
- Avoid: warm, golden and light colors like orange, coral, warm browns
- Your Makeup: use your palette colors to your eyes, lips and nails, foundation and blusher should be cool and rosy undertones, avoid bronzer.
- Your Jewelry: silver, white gold, rose gold
- Your style: dramatic and natural



# Summer

- Best colors for Summers are blue, rose or gray undertones.



## SUMMER

Hair

Eyes

Skin

A section titled "SUMMER" containing three sub-sections: "Hair" with a 2x4 grid of hair color swatches, "Eyes" with a 2x4 grid of eye color swatches, and "Skin" with a row of four skin color swatches.

# WHICH SUMMER ARE YOU?

LIGHT SUMMER

SOFT SUMMER

COOL SUMMER

## SKIN COLORS

fair, light beige, rosy beige,  
may have grayish freckles

light and neutral beige,  
beige, may have grayish  
freckles

cool beige, rosy beige,  
porcelain

## HAIR COLORS

extra light to medium  
ash blonde

light to deep ash blonde,  
"mousy"

extra light or medium to  
deep ash blonde,  
gray, silver

## COLORS OF THE EYES

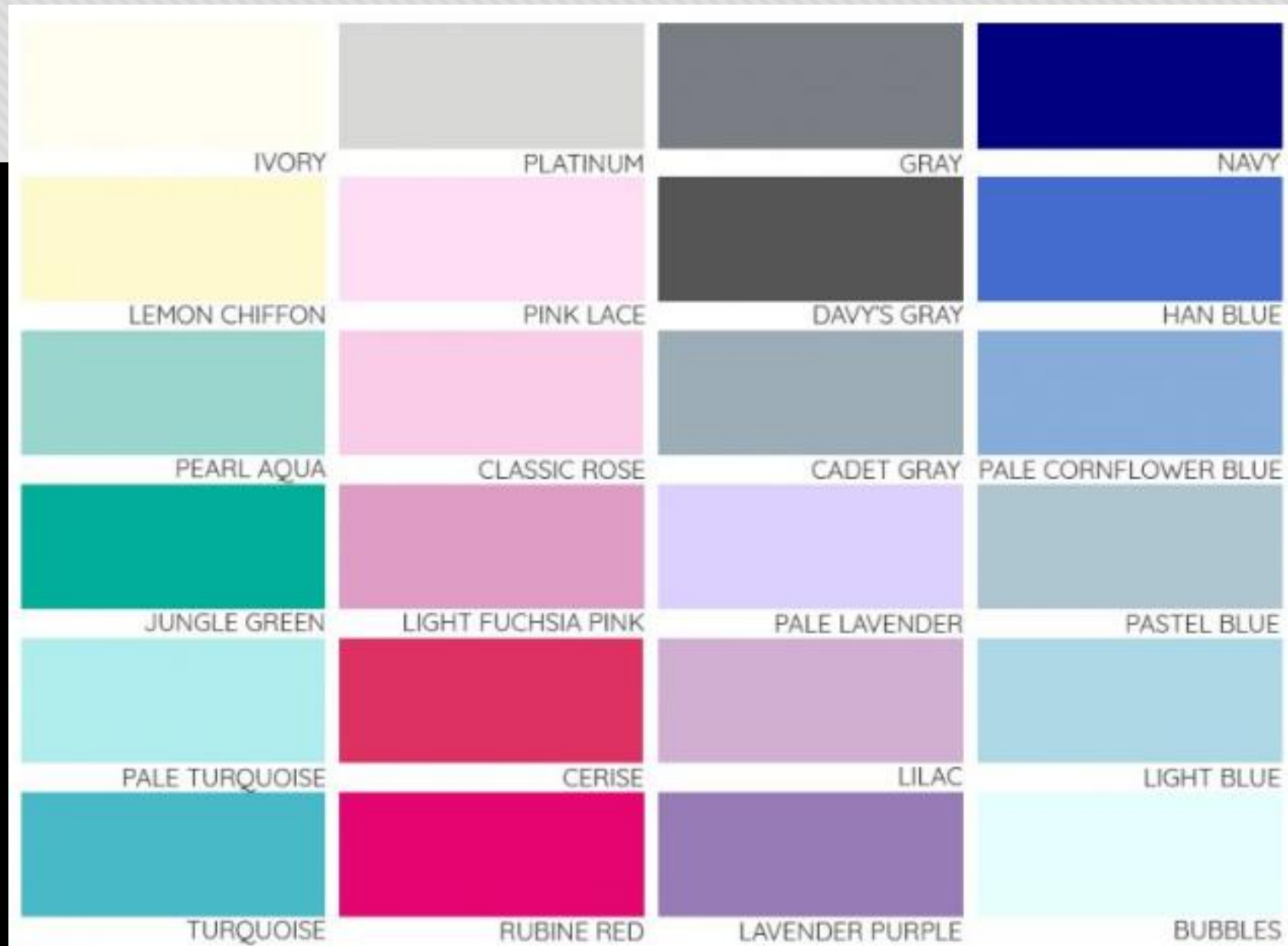
light and grayish blue  
or green

soft grayish blue or green,  
soft hazel, light brown

grayish blue or green,  
aqua, gray

# Light Summer

- Your Neutral Colors: ivory, soft white, navy, grayish-blue and grays
- Avoid: black, dark and bright colors, browns and orange
- Your Makeup: use your palette colors to your eyes, lips and nails, foundation and blusher should be rosy and cool undertones, avoid bronzer.
- Your Jewelry: silver, rose gold, white gold
- Your style: classic and romantic





# Soft Summer

- Your Neutral Colors: soft white, navy, grays
- Avoid: clear and bright colors, browns and oranges
- Your Makeup: use your palette colors to your eyes, lips and nails, foundation and blusher should be cool and rosy undertones, avoid bronzer.
- Your Jewelry: silver, rose gold, white gold
- Your style: classic and natural



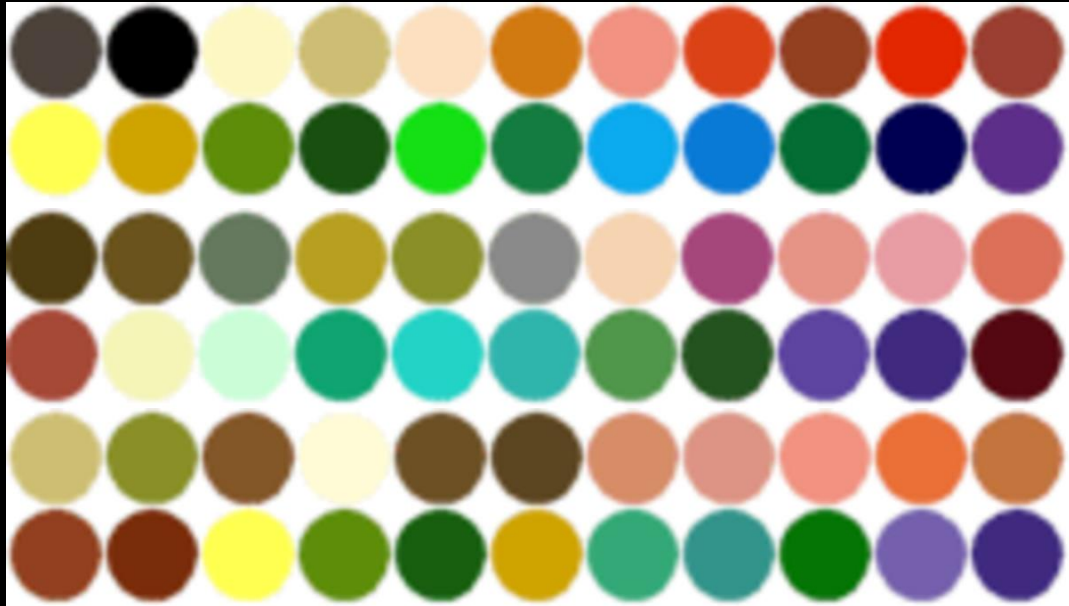
# Cool Summer

- Your Neutral Colors: soft white, navy and grays
- Avoid: bright and warm colors, browns and oranges
- Your Makeup: use your palette colors to your eyes, lips and nails, foundation and blusher should be cool and rosy undertones, avoid bronzer.
- Your Jewelry: silver, white gold, rose gold
- Your style: classic and dramatic



# Autumn

- Best colors for Autumns are those with golden undertones.



## AUTUMN

Hair

Eyes

Skin

Your Colours

A comprehensive color palette for autumn. It features a grid of 32 color swatches (4 rows by 8 columns). The top row consists of warm, golden tones. The second row includes various shades of brown and orange. The third row shows a mix of warm and cool colors. The bottom row features cooler colors like teal, green, and light green.

# WHICH AUTUMN ARE YOU?

WARM AUTUMN

SOFT AUTUMN

DEEP AUTUMN

## SKIN COLORS

golden or neutral beige,  
ivory, cream, bronze,  
may have freckles

beige, neutral beige, warm  
olive, latte, may have  
freckles

medium or neutral beige,  
bronze, caramel, warm olive  
may have freckles

## HAIR COLORS

light golden blonde, light  
strawberry blonde

medium to deep blonde,  
medium strawberry blonde,  
can be ashy

deep golden blonde, light  
brown, medium auburn,  
chestnut

## COLORS OF THE EYES

warm blue or green, hazel,  
medium brown

grayish blue or green,  
light hazel or brown

warm deep brown,  
dark green, deep hazel



# Warm Autumn

- Your Neutral Colors: soft white, cream, navy, chocolate brown
- Avoid: cool and soft colors, black, gray, pink, lilac
- Your Makeup: use your palette colors to your eyes, lips and nails, foundation and blusher should be peachy and gold undertones, you can use bronzer and avoid pink blusher.
- Your Jewelry: gold, bronze, copper
- Your style: natural and romantic



# Soft Autumn

- Your Neutral Colors: cream, navy, caramel, taupe brown
- Avoid: dark, cool and bright colors, black, gray, pink, lilac
- Your Makeup: use your palette colors to your eyes, lips and nails, foundation and blusher should be peachy and gold undertones, you can use lighter bronzer and avoid pink blusher.
- Your Jewelry: gold, lighter bronze, copper, rose gold
- Your style: natural and classic



# Deep Autumn

- Your Neutral Colors: cream, navy, dark chocolate, black-brown
- Avoid: cool, bright and dusty colors, gray, bright pink, lilac
- Your Makeup: use your palette colors to your eyes, lips and nails, foundation and blusher should be peachy and gold undertones, you can use bronzer and avoid pink blusher.
- Your Jewelry: gold, bronze, copper
- Your style: natural and dramatic



# Spring

- Best colors for Springs are those with clear yellow undertones.




## SPRING

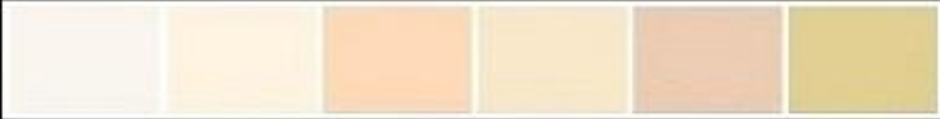
Hair



Eyes



Skin



Your Colours





# WHICH SPRING ARE YOU?

LIGHT SPRING

WARM SPRING

CLEAR SPRING

## SKIN COLORS

ivory, peachy with golden undertone, may have freckles

peachy, creamy, golden beige, may have freckles

peachy, ivory, porcelain, may have freckles

## HAIR COLORS

light golden blonde, light strawberry blonde

light to medium golden blonde, strawberry blonde, light copper

light to deep golden blonde, bright red

## COLORS OF THE EYES

light and soft blue or green

turquoise, light green, light hazel

bright and clear blue or green, warm brown

# Light Spring

- Your Neutral Colors: ivory, cream, beige, caramel, navy
- Avoid: every dark and cool shade such as black, dark brown, dark gray, plum, burgundy, fuchsia
- Your Makeup: use your palette colors to your eyes, lips and nails, foundation and blusher should be peachy and gold undertones, don't use bronzer
- Your Jewelry: lighter gold, rose gold, lighter bronze, lighter copper
- Your style: classic and romantic



# Warm Spring

- Your Neutral Colors: cream, beige, caramel, warm brown, navy
- Avoid: every dark and cool shade such as black, grays, plum, burgundy, fuchsia
- Your Makeup: use your palette colors to your eyes, lips and nails, foundation and blusher should be peachy and gold undertones, don't use bronzer.
- Your Jewelry: gold, rose gold, lighter bronze, lighter copper
- Your style: romantic and natural



# Clear Spring

- Your Neutral Colors: navy, cream, soft white, caramel
- Avoid: dusty and pale colors such as light gray, pastels, muddy browns
- Your Makeup: use your palette colors to your eyes, lips and nails, foundation and blusher should be peachy and gold undertones, don't use bronzer
- Your Jewelry: gold, lighter bronze, lighter copper, white gold
- Your style: romantic and dramatic

