

1910's

The WWI Era

• Hobble Skirt

- The hemline was large enough to allow only small steps.
- Was not popular for very long as women were becoming more active.



1910's

The WWI Era

• Bathing Suit

- Early swimsuits completely concealed a woman's body with flowing layers and were made from heavy fabrics for modesty.
- As women became more active, suits became tighter and more functional.
- Annette Kellerman shocked the world with her one piece swimsuit.

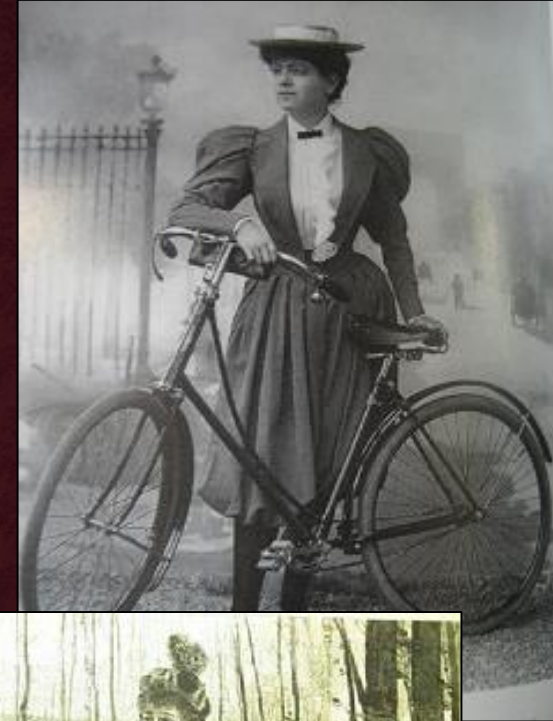


1910's

The WWI Era

• Bloomers

- Cycling was becoming very popular for both men and women.
- Amelia Bloomer designed a practical outfit consisting of a tunic dress worn over loose trousers gathered at the ankle. The trousers came to be known as "Bloomers."

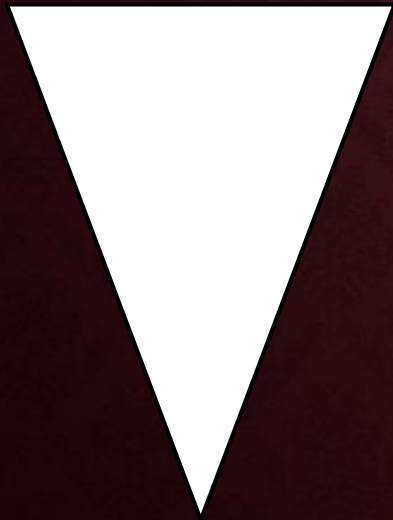


1910's

The WWI Era

- Silhouette

- Inverted Triangle



1910's *The WWI Era*

• Men's Fashion

- Military Influence
- Trench Coats

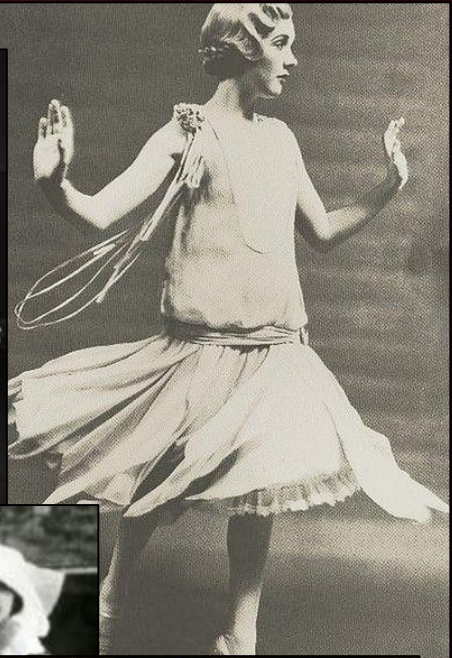


1920's

The Roaring 20's Era

• Flapper

- Young women who displayed a new energetic freedom and attitude.
- Drastic changes to hair, clothing and make-up.
- A favorite past-time for flappers was dancing.



1920's

The Roaring 20's Era

• Costume Jewelry

- Women began to wear “fake” or costume jewelry.
- Long pearl and beaded necklaces.
- Drop earrings, bracelets and rings.



1920's

The Roaring 20's Era

• Cloche Hat

- Fitted bell-shaped hat for women.
- Cloche comes from the French word for "bell".
- Shorter hairstyles (The Bob) made them easy to wear.



1920's

The Roaring 20's Era

• Dropped Waistline

- Low waistline that fell near the lower hip.
- Adds the impression of height.
- Hemline rose 4-6 inches.
- Loose and non-form fitting shift dresses.



Sheen
Crepe
Rayon
24 5 A1124
\$ 4.98



1920's

The Roaring 20's Era

• **Coco Chanel / Little Black Dress**

- In 1926, French fashion designer Gabrielle "Coco" Chanel published a sketch of a short, simple black dress in *American Vogue*.
- It has become an iconic classic piece that is considered essential in every woman's wardrobe.

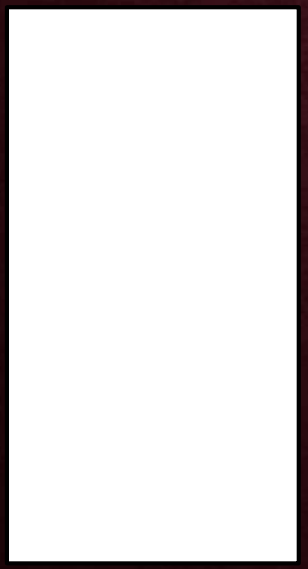


1920's

The Roaring 20's Era

- **Silhouette**

- **Rectangle/Tubular**



1920's

The Roaring 20's Era

• Men's Fashion

- Trousers creased with wider hemlines.
- Intro of the modern two piece suit.
- Wingtip Shoes

